

NEURO ASSISTANCE FOUNDATION

Help Today. Independence Tomorrow.

★ GOLF ★

BIGSHOTS CLASSIC

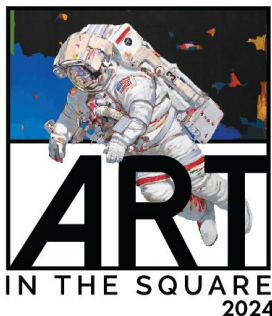
23 APRIL, 2024
1:00PM

15700 GOLF VIEW DRIVE
FORT WORTH, TX



RAFFLE
WHISKY PULL

REGISTRATION :
[NEUROASSISTANCE.ORG/BIGSHOTS](https://neuroassistance.org/bigshots)



Join NAF at
Art in the Square
in Southlake!

April 26-28, 2024

NAF is a recipient of 2024 Art in the Square.

Highlights of the festival:

Wide variety of artwork from over 150 artists exhibiting in oil, acrylic, watercolor, drawing, sculpture, jewelry, fiber and photography

Juried emerging artists and youth art.
Continuous live performances on two stages.
Wide variety of food and beverage selections.

Volunteer your TIME!

NAF needs many volunteers to fill eight - 4 hour shifts at Art in the Square. Volunteers will sit at gates to monitor people entering and leaving the event.

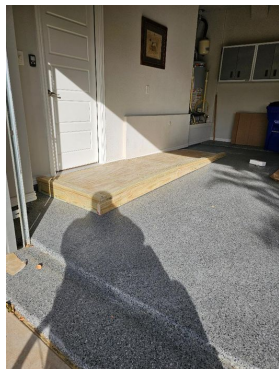


We would like to thank **44 Farms** for their generous donations to NAF for the past 5 years! They participate in our holiday promotion every year, and we are so grateful! We can personally attest to the amazing quality of their steaks and other products - you won't find a better tasting steak ANYWHERE!

44 Farms cattle are raised using animal husbandry best practices, live low-stress lives in safe environments, have access to fresh water at all times, are protected from extreme heat and cold, are fed by strict vegetarian guidelines and never receive facial branding.

No antibiotics or added hormones - EVER!

If you would like to support a company who supports NAF, purchase from their website - **44 Farms**. You will not be disappointed! Thanks **44 Farms**



Not all our clients need wheelchairs, medical supplies or bathing equipment. Sometimes it's a need as simple as a small ramp in their garage to provide wheelchair access. We are here for our clients no matter what they need.



NOVEMBER 15, 2024



Making Travel Accessible!



[Accessible Go Travel](#) - Making Travel More Accessible, Together

One stop shop for all your disability travel needs.

SEARCHING FOR
RIGID FRAME MANUAL WHEELCHAIR

Do you have an extra wheelchair collecting dust? Please consider donating that RIGID FRAME wheelchair to NAF. We have many client requests for these types of chairs. Examples of rigid frame wheelchairs are below.



Introductions

Meet Samantha...

Samantha, age 19, has Spina Bifida. Her social worker applied for assistance from NAF while she is waiting for Medicaid approval. Catheters are essential for spinal cord injured individuals. Multiple clean catheters are needed daily to prevent UTIs. Samantha needs diapers as well. NAF was happy to provide multiple months while she waits for government assistance.

\$2,400

Meet Angel...

15 year old Angel sustained a C5 spinal cord injury when he was wrestling. His mother, Nely, was not able to work because she had to stay in the hospital with him as he is a minor. She was terminated for job abandonment, and she wasn't eligible for FMLA. Nely needed assistance with one month's rent on their apartment. NAF was honored to provide the one month's rent as requested by Angel's case manager at his rehab hospital.



\$2,500

Meet Ezequiel..



\$1,100

Ezequiel, age 7, has Spina Bifida. He needs liquid food and incontinence supplies. His social worker reached out for assistance with his monthly supplies. Ezequiel needs PediaSure to sustain his strength and well being. Children With Special Health Care needs (CSHCN) is underfunded and backlogged with applications. NAF is able to provide multiple months feeding Ezequiel with your contributions.

Meet Kaieyann...

Kaieyann, age 10, has neuromuscular scoliosis due to a hypoplastic right heart syndrome. Her doctor requested an activity for feeding, speech therapy, and active learning . NAF provided a Rifton Activity

chair.



\$4,200

Meet Jeffery...



\$370

Jeffery, age 59, underwent bilateral lung transplant with post-op SCI. His social worker requested a tilt-in-space shower chair. Insurance determined it unnecessary, but we think showers are essential to quality of life. "Thanks so much for the Tilt In Space Shower Chair. Chair was received by family, and although patient had to be sent back to the ... [hospital] they are super appreciative. As are we here at ... in-patient rehab. You all really came through for this family"



Meet Board Member

Keith Murphy

Born & reared in Dallas, Texas to Andrew and Herice Murphy, their only son. Educated in the DISD for twelve (12) years and upon graduation from Franklin D. Roosevelt I enlisted in The United States Army, where I served at Fort Benning, Georgia, Korea, and Fort Polk, Louisiana where I met my wife Brenda in the spring of 1987 and in the fall of 1988 we were married. We moved back to Dallas to start our lives together and soon children were added to the union, four (4) daughters Jasmine (34), Taylor (32), Kyndall (19), Madison (17) & two (2) grandchildren Jeremiah (7) & Tiana (6)

On August 28th 2018 during a motorcycle ride on a beautiful Tuesday afternoon my life changed in an instant, while driving through an intersection I was hit by an SUV making an illegal left turn (ran the red light). "The last thing I remember is being put into an ambulance and waking up in the hospital 8 days later". My injuries were extensive including seven (7) broken ribs, a broken pelvis, hip, back (T-12), neck (C-4&5),

dislocated shoulder, collapsed lung, lacerated kidney and an amputated left leg above the knee. Due to the severity of the injury, my wife, Brenda was left to make the difficult decision to amputate above the knee in an effort to save my life. "After the accident I remained in the hospital for 6 weeks and it was complete agony. I was unable to move yet in excruciating pain, and needed spoon feeding, as well as help bathing, those initial days and weeks were a very dark place for me." By the 6th-week I was able to move off the hospital bed into a wheelchair and was released to go home on October 16th 2018.

I'm currently an amateur athlete that participates in marathons, triathlons, Spartan races, & Tough Mudders. Currently serving as a board member for The Neuro Assistance Foundation, I also volunteer to help other people with disabilities train to become athletes, and I mentor newly amputated people adapt and adjust to their new way of life after a life changing or traumatic injury or accident. My hobbies are motorcycle riding, scuba diving, & skydiving ; my next endeavor will be to ride my bicycle across America from Portland Oregon to Washington DC to raise awareness about SCI (Spinal Cord Injuries).



- Join us supporting the [NAF events](#) - attend, volunteer, sponsor.
- Choose Neuro Assistance Foundation when shopping at
 - Kroger (Link reward card to [LQ514](#))
 - Tom Thumb (Link reward card to [14315](#))
- [Make a financial and/or equipment donation.](#)

THANK YOU To Our Sponsors!



We Need Your Help

Donate ~ Sponsor ~ Volunteer

Your \$25 donation will help provide clean catheters to a paralyzed child for one month when their insurance won't cover the expense.

Your \$100 donation will help build a wheelchair ramp so we can get our clients out of rehab and through their front door at home.

Your \$200 donation will help widen the doorways in their homes so their wheelchair can fit through the bathroom door. Insurance doesn't covers home modifications.

Your \$500 donation will help provide life-changing medical equipment: wheelchairs and specialized shower chairs, etc. Most insurance only covers a small part of wheelchairs, if any, and no "bathing aids" are covered.



Neuro Assistance Foundation

Contact Us



Neuro Assistance Foundation | 2320 Bridgewood Drive, Keller, TX 76262

[Unsubscribe ccooperman@neuroassistance.org](mailto:ccooperman@neuroassistance.org)

[Update Profile](#) | [Constant Contact Data Notice](#)

Sent byccooperman@neuroassistance.orgpowered by



Try email marketing for free today!